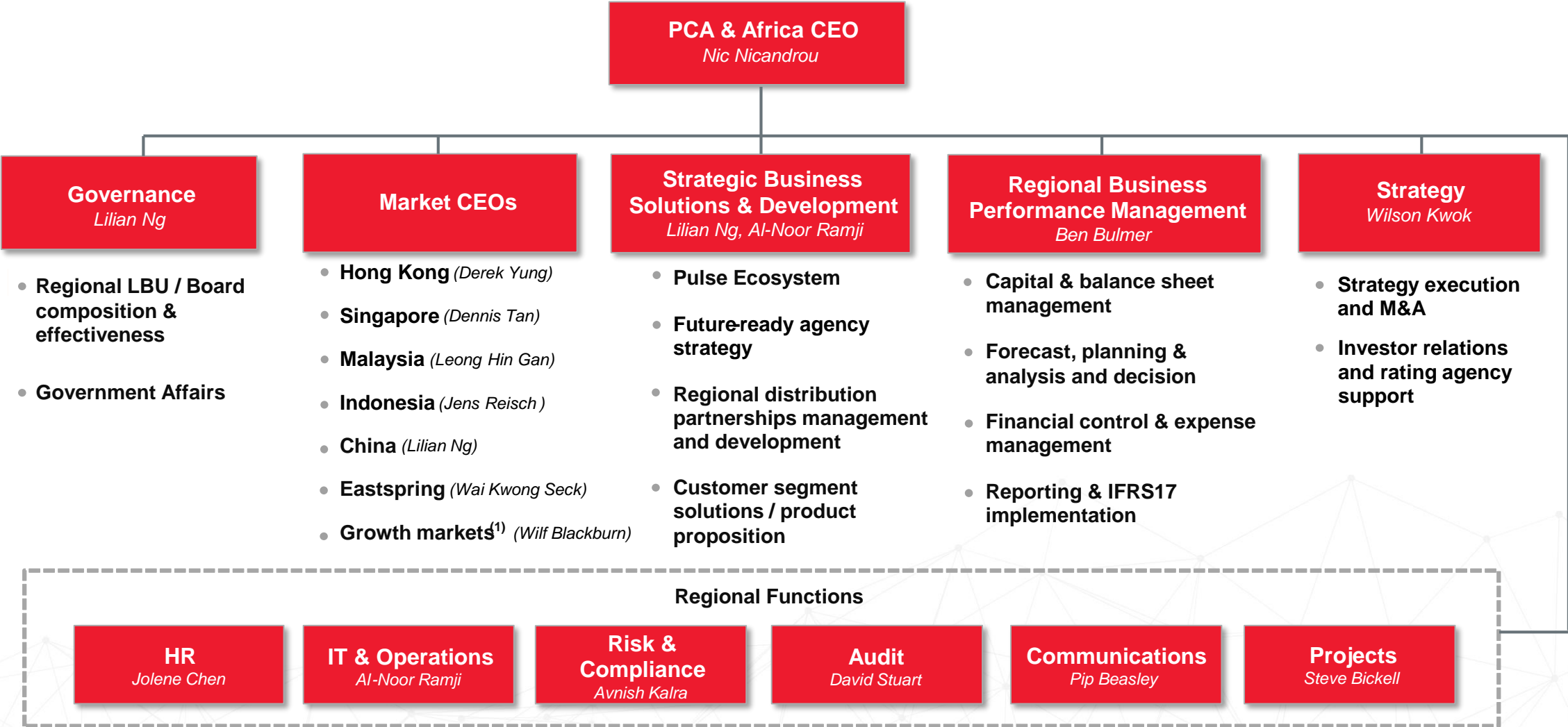
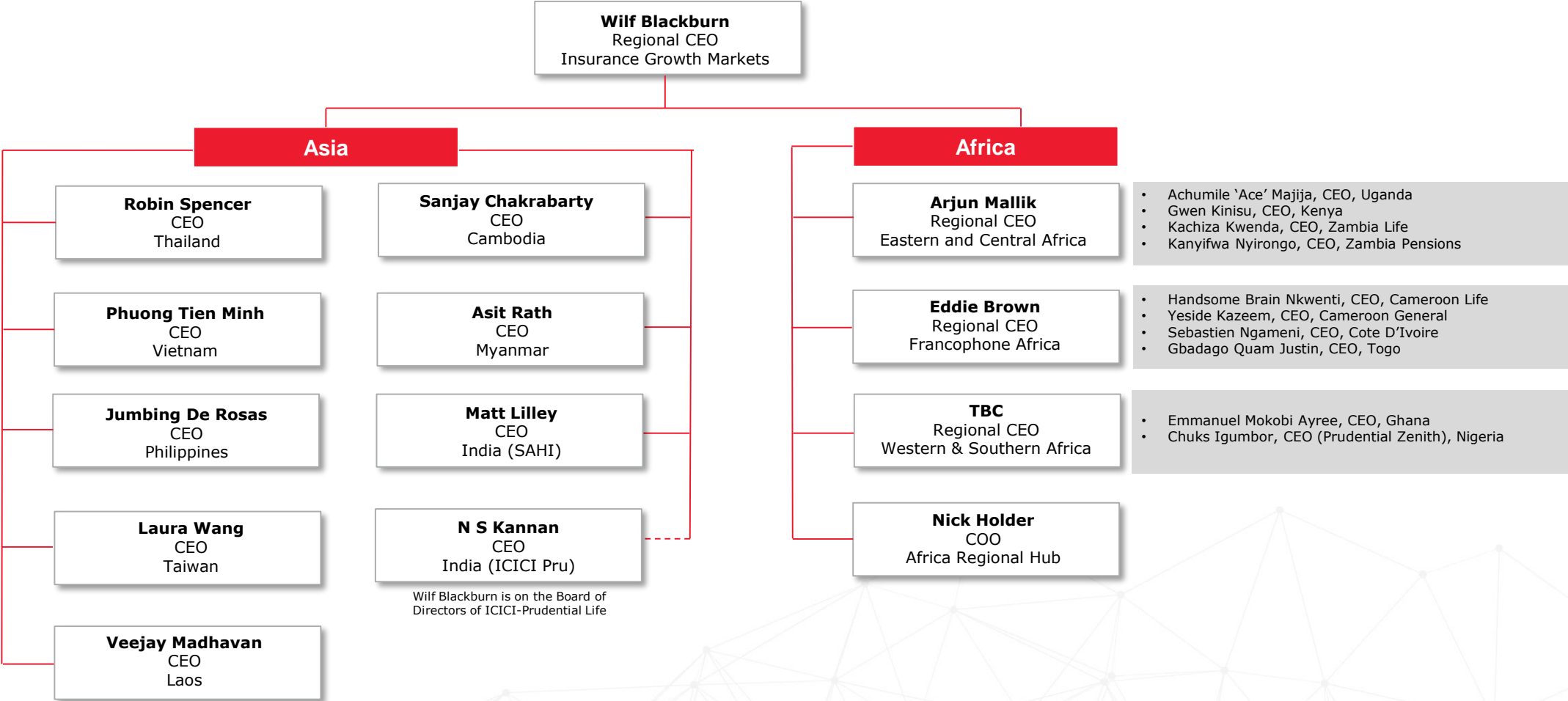


# PCA Organisation Chart



1. Comprises Cambodia, India, Laos, Myanmar, the Philippines, Taiwan, Thailand, Vietnam and 8 markets in Africa (Cameroon, Côte d'Ivoire, Ghana, Kenya, Nigeria, Togo, Uganda, Zambia).

# PrIGM Organisation Chart



# Eastspring Investments Management Team



**Wai-Kwong Seck**  
Chief Executive Officer  
(Apr 2019)

## Functional Lead

**Boon Peng Ooi**  
Head of Portfolio Strategies

**Gwee Siew Ping**  
Chief Risk Officer

**Kelvin Blacklock**  
Head of Portfolio Advisory

**Xavier Meyer**  
Head of Distribution

**Francis Woo**  
Chief Financial Officer

**Bernard Teo**  
Head of Mergers, Acquisitions  
and Joint Ventures

**Lilian Tham**  
Chief Operating Officer

**Janelle Yeo**  
Head of Corporate Strategy

**Cynthia Tan**  
Chief Human Resources Officer

## Local Business CEO

**Boon Peng Ooi<sup>^</sup>**  
Singapore

**Yasuhisa Nitta**  
Japan

**Woong Park**  
Korea

**Adisorn Sermchaiwong**  
Thailand

**Raymond Tang**  
Malaysia

**Polly Wang**  
Taiwan

**Ngo The Trieu**  
Vietnam

**Alan T. Darmawan**  
Indonesia

**Jason Xie**  
China (WFOE)

## Joint Ventures

**Nimesh Shah**  
India: ICICI-Prudential Asset  
Management Co. (49%)

**Tang Shi Chun**  
China: CITIC-Prudential Fund  
Management Co. (49%)

**Dick Lee**  
Hong Kong: Bank of China  
International-Prudential Asset  
Management Co. (36%)